

Hi everyone. It's October already, and we are currently scheduling the courses for next year. Where has this year gone?

We hope you have all survived the colds & flu not to mention the other nasty viruses attacking our computers.

Don't forget to Archive/Backup your work daily & keep your Anti-virus up to date! Some clients have lost weeks of work due to a lack of back up procedures, or downtime with virus cleanup..

AutoCAD Tips & Tricks

AutoCAD Upgrades

Autodesk are currently offering a discounted price for upgrading AutoCAD 2002 products to 2004. This offer expires on the 24th October 2003...

Retirement of AutoCAD 2000 based products

On 15 January 2004, AutoCAD 2000 and based products will be retired. This means that Autodesk will no longer offer Upgrades and Crossgrades from AutoCAD 2000 based products. Autodesk will also cease to provide technical support, apart from any existing maintenance patches that are downloadable from the US Autodesk website, <http://support.autodesk.com>.

Let us know if we can be of help in giving you pricing or helping you to upgrade your products.

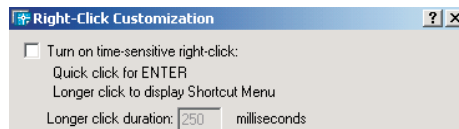
The Great Right-click Debate!

When AutoCAD 2000 was released, many users found it difficult to adjust to the right-click setting which replaced "enter" with a pop-up menu. Previously we suggested people utilise the advantages the menu provides, so instead of using right-click for 'enter' use the SPACEBAR on your keyboard - yes that means using both hands!

Of course the females could handle this multitasking better than the males - he he!

AutoCAD 2004 has now offered another alternative - "Turn on Time-Sensitive Right-Click"

This setting controls the right-click behaviour. A quick click is the same as pressing ENTER. A longer click displays a shortcut menu. You can set the duration of the longer click in milliseconds, and adjust the Right Click settings in the **Options** dialogue box > **User Preferences Tab**.



Pre-setting Save Options

If you have a mixture of different versions of AutoCAD in the office, or are contracting to clients using older versions, it might be useful to set your preferences to Automatically save your drawing files to the older 2000/2000i/2002 format. This is only suggested if you are in the situation where you are constantly required to save your drawings as an older version. If it is infrequently required, then simply choose the older version when using SaveAs to save your drawing.

To preset the Saved Version - go to **Options dialogue** > **Open and Save tab** > then choose the SaveAs option required from the pull-down list.

Courses through to December 2003

The courses remaining until the end of 2003 are as follows. Please call us to check for dates, times and availability of any courses you are interested in, as some of the courses have nearly filled, and we sometimes change dates to suit clients needs.

If a date/time does not suit you, please let us know as we may be able to change it!!

A01 - AutoCAD Fundamentals

Oct 20, 21, 22* 8.30am-5.00pm
(*8.30am - 12.30pm)

Nov 11,12,13,18,20 8.30am-12.30pm
Nov/Dec 26, 27, Dec 1, 2, 4 5.00-9.00pm
Dec 8,9,10,15,16 8.30am-12.30pm

A02 - AutoCAD Intermediate

Nov 10,17,19,21 8.30am-12.30pm
Dec 8,11,15,18 5.00-9.00pm Nights

A03 - AutoCAD 3D Modelling

Nov 7,8 8.30am-4.30pm(2days)

A04 - AutoCAD Advanced

Dec 11*,12,17,18* 1.00pm -5.00pm
(*12.30am - 4.30pm)

A2004 - AutoCAD Upgrade 2002 - 2004

Phone for dates & times to suit.

V01 -VectorWorks Fundamentals

October 13, 14, 15* 8.30am-5.00pm
(*8.30am - 12.30pm)
Nov 12,14*,17,18,21 1.00pm - 5.00pm
(*8.30am - 12.30pm)

V02 -VectorWorks Intermediate

Dec 5*,9,10,12* 1.00pm - 5.00pm
(*8.30am - 12.30pm)

Chief Architect Courses

Phone for dates & times to suit.


Don't forget to check out our website for
JOB VACANCIES!!!
WWW.EDUCAD.CO.NZ

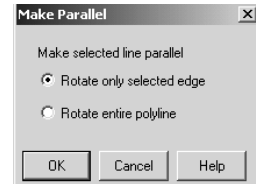
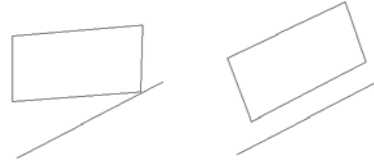
EDUCAD Ltd

P.O.Box 300 433, Albany, Auckland
Phone: 09 444 5953, Fax: 09 444 5101
Email: raewyn@educad.co.nz
WWW.EDUCAD.CO.NZ

Chief Architect Tips & Tricks

Aligning a Polyline Parallel or Perpendicular e.g. a Site.

1. Click on the Polyline to align
2. Double click on the Parallel/Perpendicular tool. 
3. Choose whether to rotate the entire Polyline or just the selected edge.
4. Click OK, then click on the object to align parallel/perpendicular to.



Deleting Wall types not used

Note: This is an Advanced tip, so make sure you backup the file you are going to edit before making changes, just incase something goes wrong!!

1. Close Chief Architect.
2. Start Windows Explorer (right click START, left click Explore).
3. Right click on MWALLAY.DAT file from the Chief Architect program folder e.g. C:\Program Files\ART inc\Chief Architect 9 folder. Choose Copy, then right click again and choose Paste. This will create a backup copy of the original file.
4. Now double-click/open the MWALLAY.DAT file (choose Notepad to open the file into, if prompted).
5. Delete the Wall types you do not require e.g. Double Skin Wall (Transportables) including the numbers below the wall name, until the next wall type.
6. Save the file and close it.
7. Restart Chief Architect, and you should find that the wall types now no longer exist in any new files created..

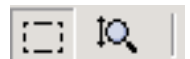
Vectorworks Tips & Tricks

VectorWorks 10.5 Series & 3D Power Pack

The entire VectorWorks product line has been updated to version 10.5. Version 10.5 is packed full of improvements and new technology including: *Interface refinements that make the program easier and faster to use, New 3D surface and solids modeling tools that allow you to create shapes that were impossible to create in previous versions and Improved printing and DXF/DWG translation reliability.* To learn more about Version 10.5 or to download the 10.5 updater, visit the following link: <http://www.nemetschek.net/10.5update/> or contact your reseller.

Interactive Zoom Mode & Intelli-mouse/Wheel mouse support

When activating the Zoom In & Zoom Out tools, from the 2D Tools palette, you will find that there are 2 modes available from the Mode Bar; Marquee Zoom Mode and Interactive Zoom Mode. The Marquee Zoom mode allows you to use the Zoom tool as you have in previous versions - zoom a marquee/window around objects. The Interactive Zoom mode allows you to zoom in/out dynamically from where you have clicked, by holding the left button of the mouse down and moving the mouse forward/backward.



Intellimouse/Wheel-mouse users can now use the middle button as a zoom in/out (rather than a pan/scroll), by holding the CTRL (Windows) or Option (Mac) key down while rolling the middle button back/forward. This works regardless of what tool is active.

Backup to Separate Folder

Vectorworks allows you to choose whether you would like to save a copy of your file to a second location upon each Automatic save. Your current .mcd file will not be saved to its original location if using this option, you will need to ensure you are manually saving your file all of the time to ensure this.

The "Save to Separate File in Backup Folder" option, saves a backup copy of the file, with the same name, to a separate folder in the same directory as the original file; this file can then be used to restore a project should something happen the original file.

EDUCAD Ltd

P.O.Box 300 433, Albany, Auckland
Phone: 09 444 5953, Fax: 09 444 5101
Email: raewyn@educad.co.nz
Visit our website at WWW.EDUCAD.CO.NZ

