



Hi again, with spring in the air we thought we had better keep you busy and up to date with some more free Tips & Tricks and current affairs.

In this issue...

- [Buildnz Trade Show - Prize Draw Winners](#)
- [Training Lab Upgrade](#)
- [Job Vacancies – Drafting Design Work available](#)
- [Extra Course Dates](#)
- [AutoCAD - Tips & Tricks](#)
- [Chief Architect - Tips & Tricks](#)
- [VectorWorks - Tips & Tricks](#)
- [VectorWorks – NEW COURSE FORMAT](#)
- [Unsubscribing to these Tips & Tricks](#)

BUILDNZ Trade Show

It was great to see those of you that attended the Buildnz Trade show. We hope that those of you who had a chance to sit in on one of our free CAD Courses enjoyed them. It was nice to have a chance to chat and catch up with those of you we have trained in the past.

Prize Draw Winners

For all of you that entered in the Prize draw, we are sorry that you missed out.

The following people were lucky enough to catch a prize – [congratulations!](#)

1st Prize – An EDUCAD Course

Goes to Stephen Sutherland.

2nd Prize – 2 hours one-on-one Tuition

Goes to Nicki Wilson.

3rd Prize – Dinner at the “Malthouse” bar and restaurant in Greenhithe.

Goes to Allan Johnson.

Training Lab Upgrade

Yahoo! We have just had a big spending spree on our training lab. New machines – very fast, larger monitors, Intellimice, new sunshade blinds, a ramp up to the front door, the works. And a revamp of our network, which for anyone who has done this, was a massive undertaking. Everything is now up and running smooth and fast!!!

JOB VACANCIES & STAFF

A number of our clients are seeking contract & full time staff for drafting/design positions. If you would like more information on this please call us and we can send you a listing of jobs available. Or go to our website at <http://www.educad.co.nz/jobs.htm> this list will be updated every month.

If you have a job vacancy you wish to advertise, you can email robyn@educad.co.nz and we will put your details on the site.



Extra Course Dates

We have had a high demand to run more courses, so have scheduled a number of extra courses up to the end of the year. These include some Saturday courses and courses run over 2½ days for those of you outside Auckland.

Have a look at our website for the latest course dates <http://www.educad.co.nz/courseschedule.htm> or give us a call and we will send you the latest schedule.

AutoCAD - Tips & Tricks

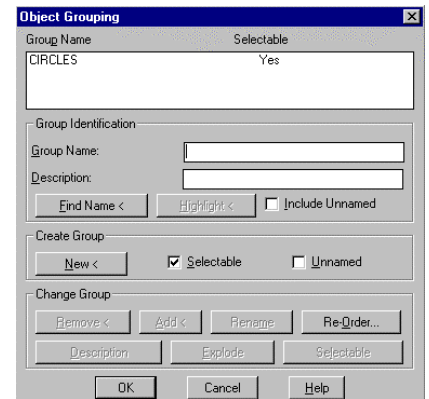


AutoCAD + AutoCAD LT – Using Groups

Brief background on Groups: A group is a named selection set of objects. Groups are saved with the drawing. Group definitions are maintained when you use a drawing as an external reference or insert it in another drawing. When items are grouped you are able to select any one of the objects and the whole group is selected. However the power of Groups is the ability to toggle Grouping ON/OFF, allowing you to edit any of the objects at any time individually. Turning Grouping on then resets the Group again. Objects can also be members of more than one Group.

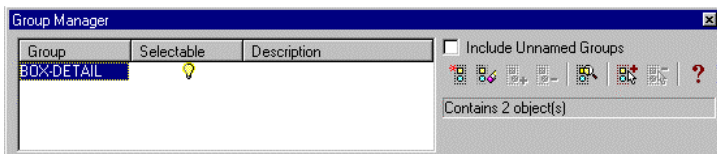
We cover Groups in more detail in our [A02 Intermediate Course](#) or with a very small amount of one-on-one training.

To create a Group, type in Group or (G) at the command line. In AutoCAD (Full) give the group a name, then click on the New button and select the objects you wish to be included in the group. (it's that easy). Now use the CTRL <A> to turn groups ON/OFF.

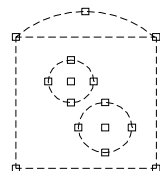


In AutoCAD LT, once you have the Group Box open, Grip on the objects you wish to include then click on the Create Group button, a name box appears in the left hand Group List pane, type in the name you want and hit enter. Again, very simple. Now use the CTRL <H> to turn groups ON/OFF.

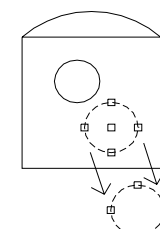
AutoCAD (Full Version) Groups Dialogue Box



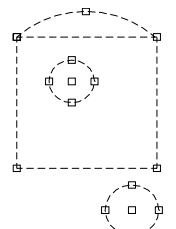
AutoCAD LT Groups Dialogue Box.



Grouping ON and group selected



Grouping OFF and single object selected and edited



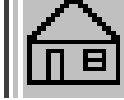
Grouping ON again and group selected

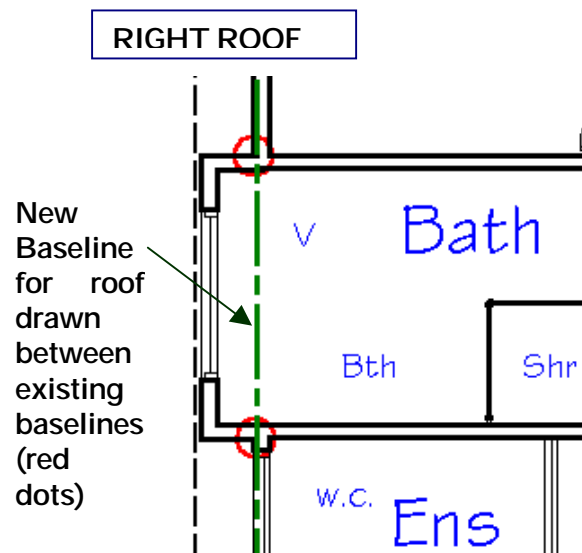
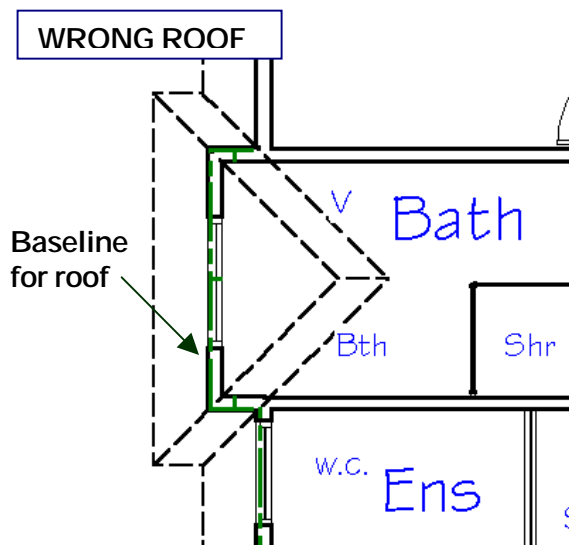
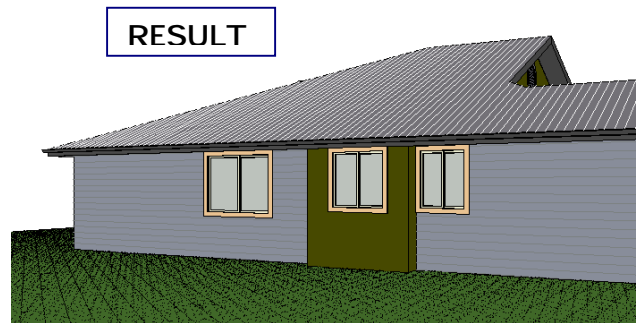
Tip - To turn Groups ON/OFF
AutoCAD full - hold down <CTRL> and type <A>
AutoCAD LT - hold down <CTRL> and type <H>.

Chief Architect - Tips & Tricks

Automatically Generate Continuous Roofs over Wall Outcrops

We often make walls outcrop under the eaves in bathroom areas of designs. Unfortunately, the automatic roof facility will assume the roof is to follow this outcrop unless you add a manual "Gable line". This is easy to do and will ensure whenever you rebuild roofs/floors/ceilings at any time, the roof will continue over the outcrop as if it does not exist! To do this:

1. Zoom in close to the outcrop.
2. Turn off any items not required, so when generating the new Gable/Base line it will be clearer to define.
3. Click on the Roof icon then the Gable line tool. 
4. Drag the new Gable/Base line from the ends of the existing baseline as shown below. Make sure the new Gable line "snaps" to the ends of the existing Baselines.
5. Rebuild Roofs, Floors and Ceilings.



Vectorworks - Tips & Tricks

New Tricks in VectorWorks 9.0

There are several really small improvements to VectorWorks 9.0 which give you a huge productivity increase. [These two tools cannot be ignored.](#)

New Cancel with ESCape Button

Esc


Now, in VectorWorks 9.0, if you wish to cancel any tool you have started, all you need to do is hit the ESCAPE key on the top left of your keyboard. **Try it out, its quick and easy.**

C A D T R A I N I N G S P E C I A L I S T S

PO Box 300 433, Albany, Auckland, New Zealand WWW.EDUCAD.CO.NZ

Phone 09 444-5953, Fax 09 444-5101, Email raewyn@educad.co.nz

'Boomerang' PAN tool

VectorWorks 9.0 now allows you to PAN whilst in a tool, with the 'Boomerang' feature. All you have to do is hold the SHIFT key down while you are using a tool and a hand symbol will appear instead of the arrow.  Pan where you want to and when you let the SHIFT key go, you can continue drawing. Try it with the Line or Wall tool first to see how useful this little feature is!!!

Vectorworks - NEW COURSE FORMAT

After a reassessment of our VectorWorks Courses we will be offering you all a new set of VectorWorks with a brand new format. We will be running the courses with different date and time options, in a more flexible manner.

These will include courses more spread out, some ½ day courses spread over 2 weeks, evening courses, Saturday courses etc. The new format will give you more time to practice between the sessions, hopefully meaning you get more out of the courses. There will be a number of different date options, and we will notify you of these as they come available.

To help us with planning the course options, it would be great to get some feedback on what you would prefer if you attended a VectorWorks course.

Course Options (please tick your preferences)	Please tick
<i>I prefer Evening classes</i>	<input type="checkbox"/>
<i>I prefer Daytime classes</i>	<input type="checkbox"/>
<i>I am interested in Saturday Classes</i>	<input type="checkbox"/>
<i>I prefer courses run over 2 – 2½ days</i>	<input type="checkbox"/>
<i>I prefer courses more spread out (say 2 classes one week & 2-3 classes the next)</i>	<input type="checkbox"/>
<i>I am interested in an intensive 5 day course with a real project example.</i>	<input type="checkbox"/>
<i>I am interested in a course dedicated to Architectural Working Drawings and 3D</i>	<input type="checkbox"/>
<i>I am interested in a course dedicated to non Architectural aspects of VW's 2D &/or 3D</i>	<input type="checkbox"/>
<i>Any other comments...</i>	

We are interested in hearing from those who have already attended our courses also!

Unsubscribe to Email Newsletter

If you wish to unsubscribe to this email and only receive printed matter please email us at unsubscribe@educad.co.nz. Put your name in the subject. Let us know if you wish to be removed from the database completely.

C A D T R A I N I N G S P E C I A L I S T S

PO Box 300 433, Albany, Auckland, New Zealand WWW.EDUCAD.CO.NZ

Phone 09 444-5953, Fax 09 444-5101, Email raewyn@educad.co.nz