

# EDUNews - July 2001



Hi again. This newsletter has been a long time coming. 2001 has been a very busy year for us, and for all of you out there who we have been training – keep up the good work!

## In this issue...

- [Email Newsletters](#)
- [BuildNZ Trade Show](#)
- [Free CAD Courses at BuildNZ](#)
- [New AutoCAD 2002](#)
- [AutoCAD - Tips & Tricks](#)
- [Chief Architect - Tips & Tricks](#)
- [VectorWorks - Tips & Tricks](#)

Print out this newsletter and keep it in a safe place so that you can come back to it in the future.

## General News

### *EMAIL Newsletters*

Some of you will have received this newsletter via email. We hope that it is still enjoyable and readable. This is our first attempt so we are happy to receive any comments.

If you didn't receive this via email and you would like to: **Email us at [Newsletter@educad.co.nz](mailto:Newsletter@educad.co.nz).** Please remember to put your first and last names in the text of the email. To [unsubscribe](#), go to the end of this newsletter.

### ***BUILDNZ Trade Show – August 12<sup>th</sup>, 13<sup>th</sup>, 14<sup>th</sup>***

The improved BUILDNZ is back. It used to be called Buildex, but this year they are incorporating the Index/Lighting shows. If you would like more information see [www.buildnz.com](http://www.buildnz.com)

**FREE Courses:** During the BuildNZ show we will be running some **FREE** ¾ hour training sessions on many topics which may be of interest to you. See next page for details and booking form.

### ***New - AutoCAD 2002***

Yes you read right, Autodesk has just released its latest version 2002. The update is for both AutoCAD and AutoCAD LT.

### **2002 Upgrade Training**

We are ready to go and have attended the Autodesk Trainer sessions. Call us to arrange a 2002 Upgrade Training Session when you upgrade your software. Remember we can come to you, or you can come to our quiet relaxed offices here in North Harbour.

There are some awesome new features in this release; a few of our favourites are...

- **Associative Dimensioning**
- **Great improvements to the Attribute Tools**
- **Layer Tools (some previously in the Express Tools)**
- **New Tools to manage your CAD Standards**
- **and loads more**

Go to [www.autodesk.com/autocad](http://www.autodesk.com/autocad) if you want more information about the new features.

**C A D T R A I N I N G S P E C I A L I S T S**

PO Box 300 433, Albany, Auckland, New Zealand [WWW.EDUCAD.CO.NZ](http://WWW.EDUCAD.CO.NZ)

Phone 09 444-5953, Fax 09 444-5101, Email [raewyn@educad.co.nz](mailto:raewyn@educad.co.nz)

# FREE Quick COURSES at BUILDNZ



**To book:** Fill in the form below, email or fax it to us. Spaces are limited and the course will be run on the actual stand with public standing in the background. The first 3 people booked for each course will be using a computer hands-on, first in first served with the bookings. This was a great success at the last show in 1999, so we look forward to seeing you.

## We will be on stand number 220 in Hall 2

**Show Times:** Sun 12th - 10am-6pm, Mon 13th - 10am-8pm, Tues 14th - 10am-6pm **August**

Code	Description	Date (August)	Time	Tick to book
B1	Chief 7 - Digital Terrain Modelling	Sunday 12th	10.30-11.15am	<input type="checkbox"/>
B2	ACAD 2002 - New Block Attribute Tools	Sunday 12th	11.45-12.30pm	<input type="checkbox"/>
B3	ACAD 2002 - Layer Tools (there are loads of them now)	Sunday 12th	2.45-3.30pm	<input type="checkbox"/>
B4	ACAD 2002 - Working with layouts	Sunday 12th	4.00-4.45pm	<input type="checkbox"/>
B5	ACAD 2002 - New drafting tools, Assoc Dims, Text, etc	Monday 13th	10.30-11.15am	<input type="checkbox"/>
B6	ACAD - Creating toolbars & icons, & associating a macro	Monday 13th	11.45-12.30pm	<input type="checkbox"/>
B7	ACAD 2002 - New Block Attribute Tools	Monday 13th	2.45-3.30pm	<input type="checkbox"/>
B8	Chief 7 - CAD Detail & Moulding libraries	Monday 13th	4.00-4.45pm	<input type="checkbox"/>
B9	ACAD 2002 - Working with layouts	Monday 13th	6.00-6.45pm	<input type="checkbox"/>
B10	ACAD 2002 - Layer Tools (there are loads of them now)	Tuesday 14th	10.30-11.15am	<input type="checkbox"/>
B11	ACAD 2002 - New drafting tools, Assoc Dims, Text, etc	Tuesday 14th	11.45-12.30pm	<input type="checkbox"/>
B12	ACAD - Creating toolbars & icons, & associating a macro	Tuesday 14th	2.45-3.30pm	<input type="checkbox"/>
B13	ACAD 2002 - New Block Attribute Tools	Tuesday 14th	4.00-4.45pm	<input type="checkbox"/>

Please fill in your details below: (For each person booking please fill in a separate form).

Name

E-mail

Phone

Fax

**C A D T R A I N I N G S P E C I A L I S T S**

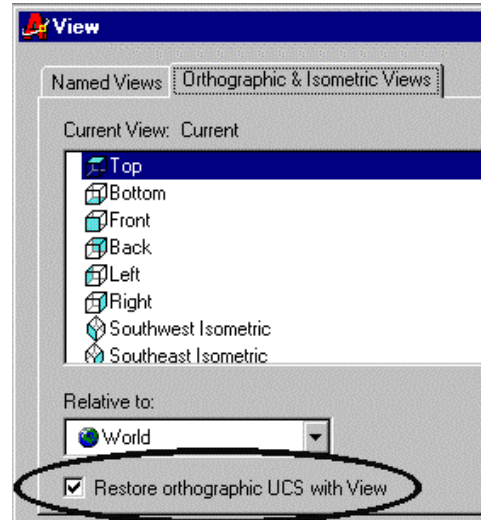
PO Box 300 433, Albany, Auckland, New Zealand WWW.EDUCAD.CO.NZ

Phone 09 444-5953, Fax 09 444-5101, Email raewyn@educad.co.nz

## UCS and View relationship

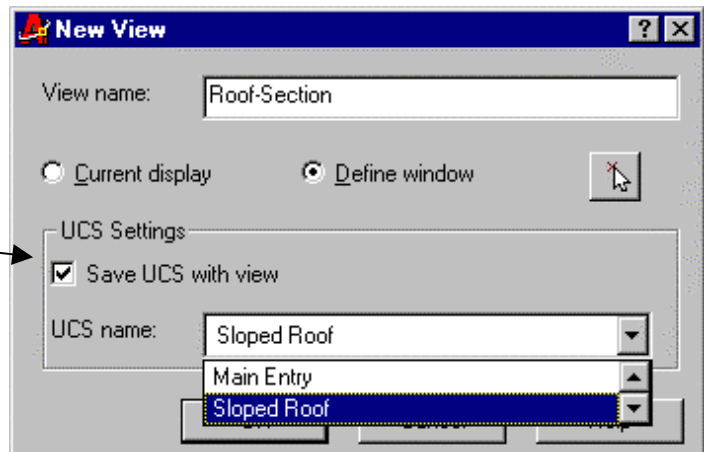
The view command in AutoCAD 2000 added a new feature which enables us to link saved UCS's to Saved Views or Preset Orthographic Views. This means that when you restore a View you can have a UCS restored at the same time.

This may explain why your UCS changes every time you select a 3Dview off your View Toolbar or Pull-down menu.



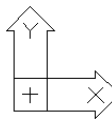
You can turn this feature ON or OFF in the View Dialogue Box > Orthographic and Isometric Views Tab. (or type UCSORTHO variable)

If you have the feature turned on, then remember when you are saving your views to specify which UCS you wish to be restored at the same time.



## UCSICON in 2000i

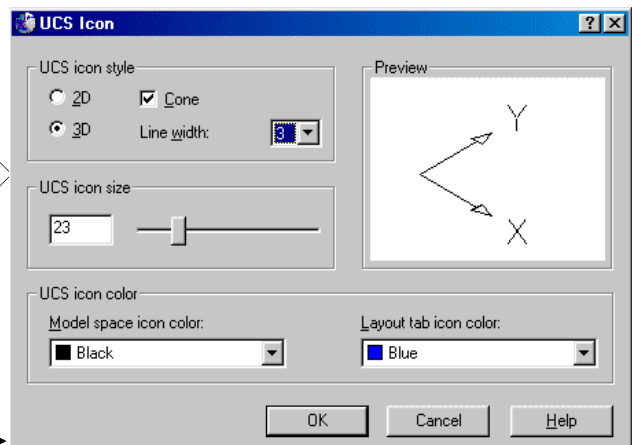
If you are using AutoCAD 2000i or LT 2000i and would like to revert back to the old UCSICON there is a setting to do this within the UCSICON command.



Command: **UCSICON**

Enter an option [ON/OFF/All/Noorigin/Origin/Properties]  
Type 'P' enter

A properties box will appear allowing you to change several features relating to the appearance of the icon; 2D(old icon), 3D (new icon), the colour of the icon, the size of the icon, etc.



# Chief Architect - Tips & Tricks



## Mouldings

Chief Architect Version 7.0 has a "Mouldings" facility (U.S. spelling = Moldings). Mouldings are available to view and select through the Library Browser. They can be attached to cabinets and soffits, used around window/door casings and specified within rooms/floor levels as skirting, chair rails and scotias.

You can either select an existing profile from the Library or can now create your own. This allows users to generate a specific parapet/façade detail, or unusual moulding profiles for various uses!

### To create your own moulding:

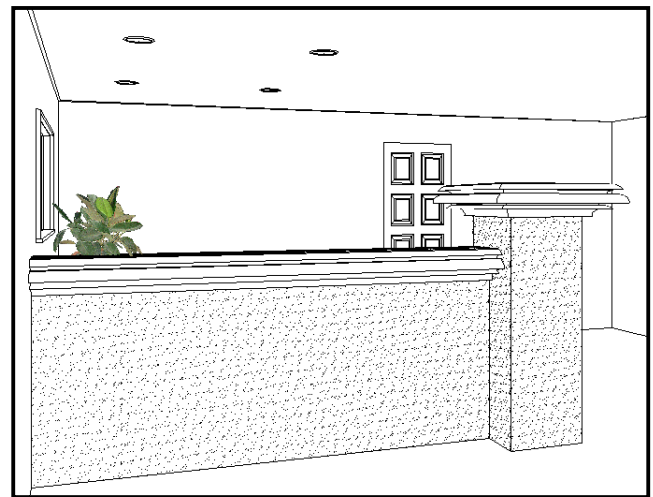
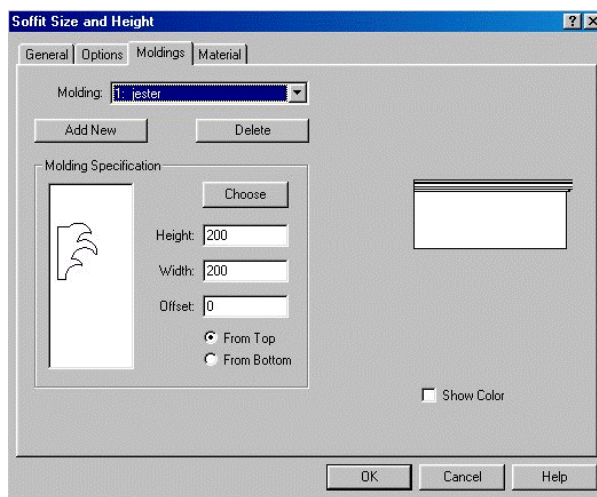
1. Draw the moulding in 2D CAD mode as a closed polyline, either in plan or in a CAD detail. The moulding must be actual size 1:1, so you may need to zoom in a great deal whilst drawing it.



**Note:** The left hand side of the moulding/profile will be treated as the "back" of the profile, so will be placed against the back of the wall, soffits, window trim etc.

2. Select the moulding, and go to Tools menu – Add to Library
3. Select the moulding library you wish to add the new moulding to, and click OK.

The new moulding is now be available for use within any drawing in Chief Architect.



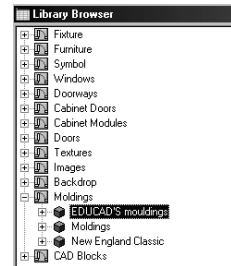
## Moulding Libraries

To make a new Library for your mouldings (separate from the Chief mouldings):

1. Go to Windows Explorer or your file manager of your computer.
2. Locate the Chief 70 program folder, then open the Libraries folder.
3. Locate the file: "Moldings.alb"
4. Click on this file and then go to Edit menu – Copy, then to Edit menu – Paste.
5. Scroll to the bottom of the Library folder (right hand side) and you should find a new file: "copy of molding.alb"



- Click on this new file and go to File menu – Rename – and rename the file to be what you want eg. “Educad’s mouldings.alb” and then enter. (make sure the “.alb” is still at the end of the filename).
- Close down and then restart Chief Architect and open the Library browser – you should find your new library under the Mouldings library.



**Note:** you will need to delete the “copied” mouldings from this new library before adding your own moulding profiles. To do this – go to Tools menu – Delete from Library and select the items to delete.

## Vectorworks - Tips & Tricks

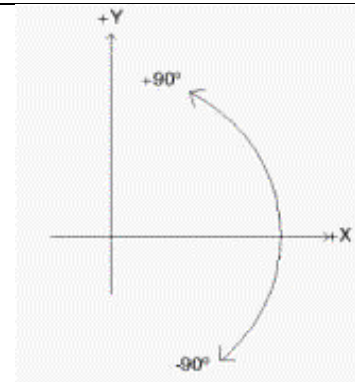
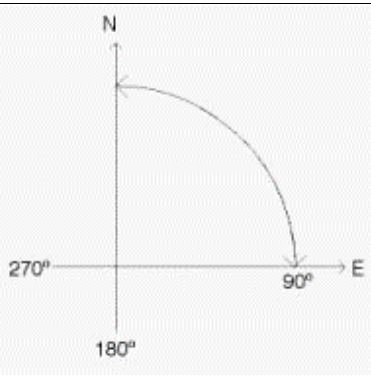
### VectorWorks 9 is now available

Call us for VectorWorks 9 and VectorWorks Architect 9 Training.

### Property Bounds Tool

The Property Bounds Tool is really useful for drawing up site plans. On the last Tips and Tricks we gave you a way of dealing with the degrees, minutes and seconds. We have repeated this for you. When you use the Property Bounds Tool, it assumes that you want to start at one corner boundary and work your way all around, either clockwise or counter-clockwise until you close the site. Surveyors rarely use this method for measuring sites. There may be times when you are typing in your property boundaries and the lines go in the wrong direction.

#### First Principles

VectorWorks Angles	Surveyor Angles
 <p>0° is to the right of the page 90° is straight up the page positive degrees go counter-clockwise</p>	 <p>0° is straight up the page 90° is to the right positive degrees go clockwise</p>

#### How to Start

- Select the Property Bounds Tool from the AEC palette in the AEC Workspace.
- Click your mouse at the starting point you want to use for your property bounds polygon. The Create Property Bounds dialog box appears.
- Enter the information for the first boundary line.



Type in the distance and use the surveyors bearings as they are shown on the title. Type in the first length, and the first bearing, click on the Apply button and you should notice a line on the screen. Type in the second distance and the second bearing, click on the Apply button again and you should find the site starting to be created. Do this for the whole site. It doesn't matter whether you work clockwise or anti-clockwise.

**C A D T R A I N I N G S P E C I A L I S T S**

PO Box 300 433, Albany, Auckland, New Zealand WWW.EDUCAD.CO.NZ

Phone 09 444-5953, Fax 09 444-5101, Email raewyn@educad.co.nz

In **Vectorworks Architect 9** you must type in the direction letter e.g. "N" at the beginning of the bearing and "E" at the end of the bearing .

### Boundaries go the wrong way

Sooner or later though, you will find that the surveyor has measured the boundary in the opposite direction to the way you are drawing it. Don't worry about this. For the bearing length, that is the bearing distance, type in the distance as a minus distance and then type in the surveyor's bearing and you will find that it works out OK.

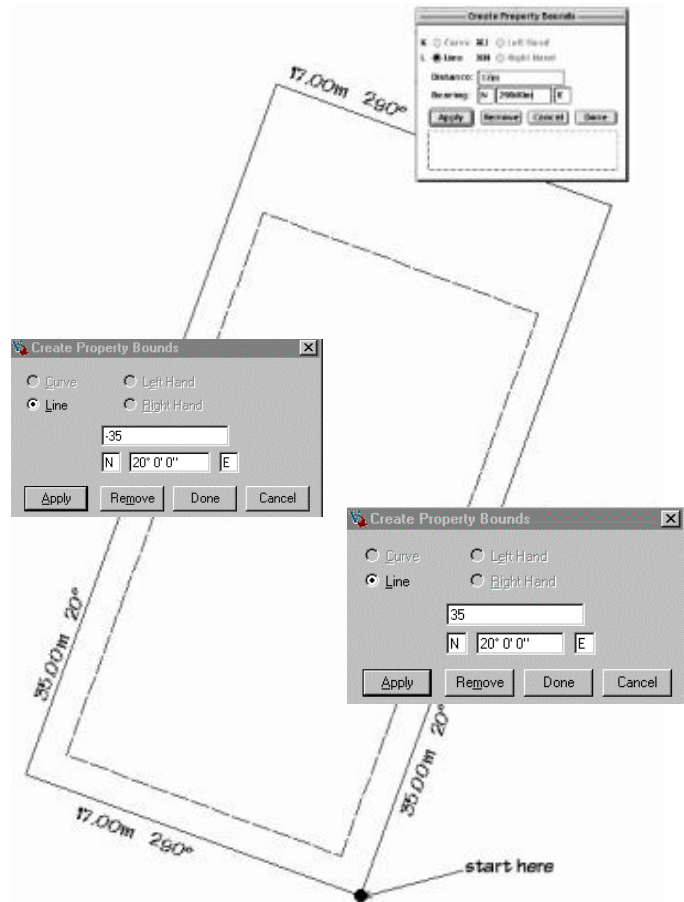
In Vectorworks Architect 9 instead of typing in the minus sign you must type in the opposite direction letter e.g. "S" and "W".

The walls haven't been drawn yet so you have to go and draw all the walls, then come back and link the walls to the site and complete this drawing.

Sometimes you lose the ° (degrees) symbol. You can use the special characters above, but there is an easier way.

Type the bearing into the Property Bound Tool using:

D	=	degrees	
m	=	minutes	20d30m10s
s	=	seconds.	

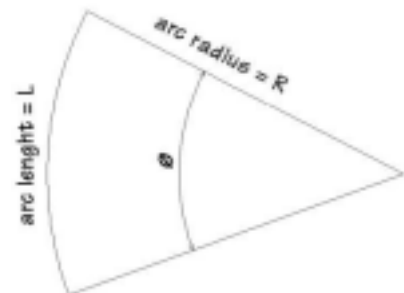


### Arc Boundaries

Some boundaries have curves on them. For these boundaries you have to enter the Arc length and the Delta angle of the curve. Most often you will not see the Delta angle on the title, but you will see the radius of the arc. From the radius of the arc and the length of the arc you can calculate the angle:

$$L = \pi R \frac{\theta}{180}$$

$$\therefore \theta = \frac{180 L}{\pi R}$$



## Unsubscribe to Email Newsletter

If you wish to unsubscribe to this email and only receive printed matter please email us at [unsubscribe@educad.co.nz](mailto:unsubscribe@educad.co.nz). Put your name in the subject. Let us know if you wish to be removed from the database completely.