

MERRY CHRISTMAS!!

Christmas again!! Another year goes by – that makes it over 5 ½ years that EDUCAD have been helping clients with their CAD Training and implementation!



We are working through *some* of the Christmas break; so if you need any training or phone support, call us to arrange some time during this period. We are also extending the training room over the Xmas break; this should make it bigger and better for 2002! For the courses that we will be offering during this time, please refer to our schedule attached. The Xmas/January courses are already filling, so give us a call to pencil in early if you are interested.

If you can't reach us at the office, try any of the following contacts...

RAEWYN - Mobile: 025 274 9331 Email: raewyn@educad.co.nz
ROBYN - Mobile: 025 773 099 Email: robyn@educad.co.nz

We hope you all have a safe and happy XMAS and look forward to an exciting 2002!

Enclosed is our Course schedule for January – June 2002. Keep it somewhere safe for next year, and we hope to see you in 2002.

In this issue...

- [Xmas courses & training](#)
- [Jan – June 2002 Course Schedule](#)
- [NEW – Solidworks training](#)
- [Job Vacancies – Drafting Design Work available](#)
- [NEW – AutoCAD Architectural Desktop Training](#)
- [AutoCAD - Tips & Tricks](#)
- [Chief Architect - Tips & Tricks](#)
- [VectorWorks - Tips & Tricks](#)

SOLIDWORKS



NEW

Yes we have been working towards this for a while, and finally we are able to offer you **SOLIDWORKS TRAINING COURSES**. We are working closely with "Intercad" to ensure the courses are successful. Intercad has provided great assistance and support to us in this new service. Initially we will be offering course times outside of working hours. To start with on Saturdays, then as they become more popular we will start offering evening classes. Refer to our course schedule enclosed for scheduled dates/times or contact us for group/corporate training arrangements. Some of the dates for this training still need to be arranged, so call us to confirm them.

C A D T R A I N I N G S P E C I A L I S T S

PO Box 300 433, Albany, Auckland, New Zealand WWW.EDUCAD.CO.NZ
Phone 09 444-5953, Fax 09 444-5101, Email raewyn@educad.co.nz

JOB VACANCIES & NEW WEBSITE LINKS

We are having great success with the new "Job Vacancies" portion of our website. If you would like more information on this please call us and we can send you a listing of jobs available. Or go to our website at <http://www.educad.co.nz/jobs.htm> this list will be updated every month.

If you have a job vacancy you wish to advertise, you can email robyn@educad.co.nz and we will put your details on the site.

We have also added a few new links on our website i.e. **driver** websites, **strategic data** and more. Have a look to see what may be of use, and if you know of a good related site we should add to our links, let us know.

AutoCAD - Tips & Tricks

[AutoCAD r.14+ AutoCAD LT 98 - Upgrade deadline](#) [JANUARY 15TH 2002](#)



The final date for upgrading AutoCAD r.14 or AutoCAD LT98 is **January 15th 2002**. After this date, full price will be charged for AutoCAD 2002/AutoCAD LT98. Call us for more information and help.

A few clients have mentioned that some of the tips are a little advanced for them until they get more skills, so here are a few good ones for any level.....

[Closing all drawings at once](#)

The new **CLOSEALL** command closes all your drawings at one time (after giving you the option to save them of course). You may want to add this as a new **alias** to your **.pgp** file, this will allow you to create a shortcut to this command e.g. **CA** for **CLOSEALL**. We can teach you how to do this over the phone, or in our Fundamentals/Intermediate courses.

[Scroll to repeat commands](#)

Use the **scroll arrows** on your keyboard to scroll back through the commands you have typed in at the command line. Use the **arrow up** to find the command you would like to repeat, then hit enter when it appears at the command line. This allows you to repeat commands that aren't the last command! **You can scroll up and down** until you find the commands you need.



Another way to repeat commands (not just the ones you have typed in or just executed) is to **RIGHT CLICK IN THE COMMAND LINE AREA** – this accesses the *Command Mode Menu* – then go to **RECENT COMMANDS** – and choose which of the 5 – 6 last commands you wish to repeat.



[Make Object's Layer Current & Layer Previous icons](#)



Make Object's Layer Current is on the left hand end of your **Object Properties** toolbar.

Click on the icon, and then click on an object. The layer this object is on will immediately be made current.



Using the above command, in combination with the new **Layer Previous** command (in AutoCAD 2002) can speed up layer usage. **Layer Previous** undoes the last change or set of changes made to layer settings e.g. when you are working on one layer, then need to quickly change to another layer to do something, use **Make Objects Layer Current** icon, then once you have finished click on the **Layer Previous** icon to restore/return back to the previous layer that was current.



C A D T R A I N I N G S P E C I A L I S T S

PO Box 300 433, Albany, Auckland, New Zealand WWW.EDUCAD.CO.NZ

Phone 09 444-5953, Fax 09 444-5101, Email raewyn@educad.co.nz

AutoCAD Architectural Desktop

NEW

From February 2002 we will be offering AutoCAD Architectural Desktop training.

We are currently not offering scheduled courses, but are organising corporate/group training or personalised tuition on request. Please call to discuss training options, and find out more.

Chief Architect - Tips & Tricks

Chief 7.0 update patches to Chief 7.01 (& older version updates)

For your update patches for Chief 6.0, 97 or the new Chief 7.0, don't forget to visit the ART website and download the latest patches. They will update everything from system crashes to adding additional libraries. The latest list of update features is too long to include with this newsletter! If you do not have access to the Web, please let us know, as we may be able to download the patch required and send it to you.

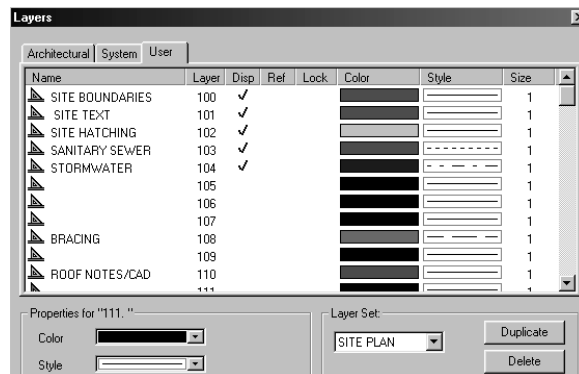
Either use the link on our website to access the Chief Architect website, or visit www.chiefarch.com direct. Under the **DEPARTMENTS** heading, go to **Technical Support - Downloads** click on the appropriate download.

Adding Layers for all of your plans

Don't forget, any CAD Layers which you consistently need for your working drawings should be added into the ProfileM plan (Template) of Chief Architect. 

Open up **ProfileM.PL1** in Chief (this file is found in C:\Program Files\ART\Chief Architect folder) – go to **Tools menu - Options - User Tab** (or click the adjacent icon) and **Add layers as required** e.g. for bracing, roof notes, boundary lines and so on, so you can turn these layers on and off in the Layout sheet to show each plan view as a different type of plan.

You can also save the "state of the layers" as a "Layer Set", *this is very difficult to teach, so is best taught either over the phone or One on One training and we have some notes which may help this.* We use Layer sets to quickly restore a plan view of the **roof framing plan** or **site plan** with the click of a couple of buttons, rather than having to tick/untick all the layers each time!! Call us for more help and advice on the **Chief 7.0 upgrade course** in which we teach it.



Vectorworks - Tips & Tricks



Saving Corrupted Files

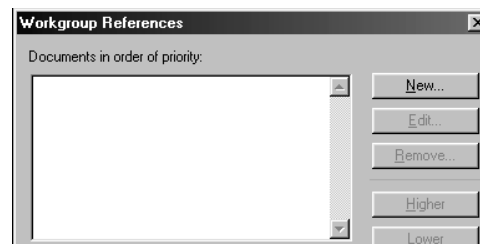
The following tip is on how to use Workgroup References to save a corrupt or crashing file.

Note: Please call us for more help if you are still having trouble, this tip does not always work 100%.

Refer to page 10-10 of the VectorWorks Architect Manual.

Do the following:

1. Leave the corrupt file closed and open a new file.
2. Go to **Organise** on the Menu Bar and choose the command **Workgroup References...**

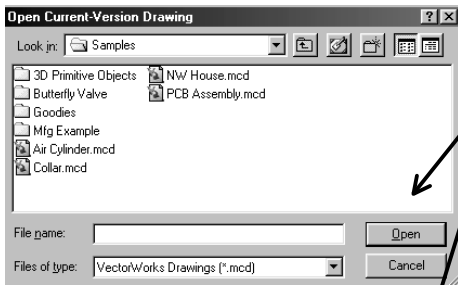


C A D T R A I N I N G S P E C I A L I S T S

PO Box 300 433, Albany, Auckland, New Zealand WWW.EDUCAD.CO.NZ

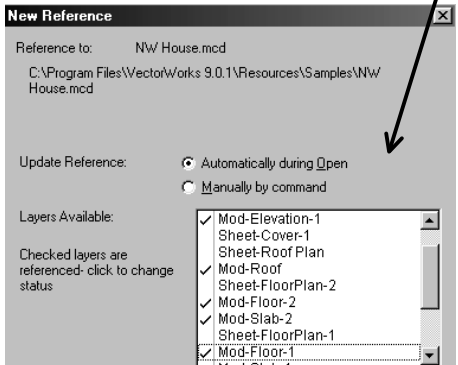
Phone 09 444-5953, Fax 09 444-5101, Email raewyn@educad.co.nz

3. You now have to add the file that is corrupt. Click on the **NEW** button.

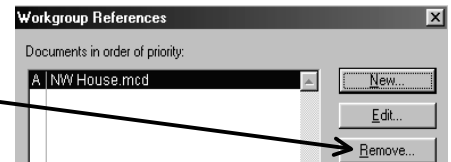


4. Find the file on your computer. Then click on the **Open** button.

5. The **New Reference** dialog box gives you control over which layers to attach to the current file. Select all the layers that you want, but do not select any layers that have layer links on them; layer links cannot be imported. Click on the **OK** button.



6. So far this is just the same as the manual. **Now for the trick; Remove the Workgroup Reference.** This will break the link to the corrupt file.



You will get a dialog box asking you what to do with all the resources that you have referenced into the current file. **Choose to keep them all** and they will stay in the current file, imported from the corrupt file.

The Workgroup References dialog box will be empty. No files are currently linked, but the layers that you chose from the corrupted file will remain in your file, and all the information on the imported layers will be imported.

Note: If you are using **VectorWorks Version 8**, please note that everything on the layers that you have imported is locked. You will have to **Unlock** them from the **Edit Menu**. In Version 9 they are already unlocked.

Vectorworks course format & Architect courses

All **VectorWorks Fundamentals** courses will be run over **5 x 4 hour sessions (½ days or evenings)** spread over 2 weeks next year. We have also scheduled in several **VectorWorks Architect** 1-day courses. Let us know if a date/time does not suit. See our latest course schedule for the new dates/times.

Don't forget we also arrange Quick courses on demand for example Digital Terrain Modelling, Rendering etc, so please call us to let us know what you need.



C A D T R A I N I N G S P E C I A L I S T S

PO Box 300 433, Albany, Auckland, New Zealand WWW.EDUCAD.CO.NZ

Phone 09 444-5953, Fax 09 444-5101, Email raewyn@educad.co.nz